

## RATES INFORMATION

Location of Rating Unit 211 Shaw Road Titirangi Auckland 0604

For period 1 July 2025 to 30 June 2026

Assessment Number 1234185791

Valuation Number 33156-00000013100

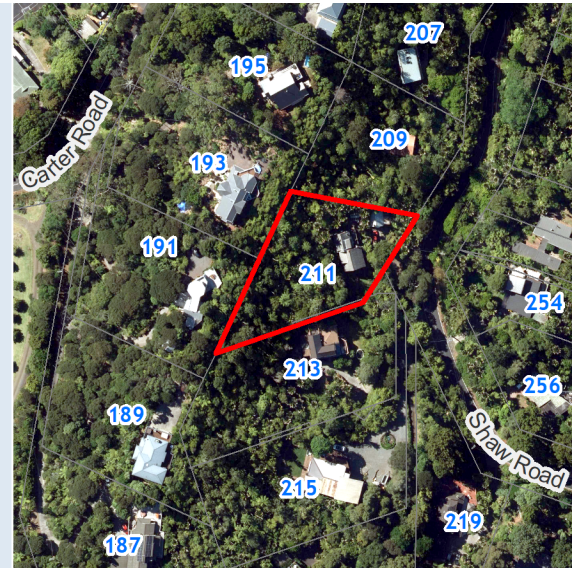
Valuation as at date 1 May 2024

Capital Value \$1,125,000

Land Value \$450,000

Record of Title Number NA15C/1439

Description of Rating Unit LOT 8 DP 60103



Description of Rates	Factor/Unit	Factor Value	Rate/Charge	Total (GST incl.)
Uniform Annual General Charge	Number of separate parts	1	\$604.00	\$604.00
General Rate - Rural Residential	Capital Value	\$1,125,000	0.00202701	\$2,280.39
Waste Management - Standard Recycling	Number of separate parts	1	\$120.32	\$120.32
Waste Management - Minimum Base Charge	Number of separate parts	1	\$43.97	\$43.97
Waste Management - Refuse Small	Number of separate parts	1	\$162.70	\$162.70
Natural Environment Targeted Rate - Non Business	Capital Value	\$1,125,000	0.00003460	\$38.93
Water Quality Targeted Rate - Non Business	Capital Value	\$1,125,000	0.00000914	\$10.28
Climate Action Transport Targeted Rate - Rural Residential	Capital Value	\$1,125,000	0.00004924	\$55.40
Waitakere Rural Sewerage Targeted Rate	Per service provided	1	\$336.80	\$336.80
Total Auckland Council Rates for 2025/2026 (including GST)				\$3,652.79