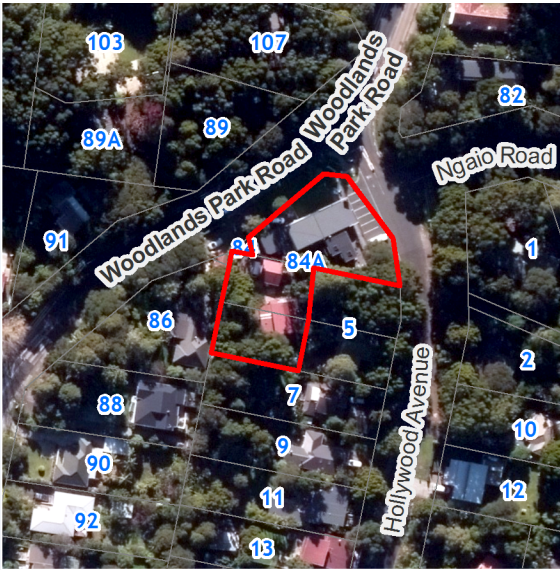


RATES INFORMATION

Location of Rating Unit	84A Woodlands Park Road Titirangi Auckland 0604	
For period	1 July 2024 to 30 June 2025	
Assessment Number	1234183261	
Valuation Number	33700-00000020001	
Valuation as at date	1 June 2021	1 May 2024
Capital Value	\$1,125,000	\$1,025,000
Land Value	\$480,000	\$600,000
Record of Title Number	NA1806/89	
Description of Rating Unit	PT LOT 1 DP 37794, PT LOT 2 DP 37794, PT LOT 3 DP 37794	
<i>Please Note: The values as at 1 June 2021 were used to assess the 2024/25 rates. The values as at 1 May 2024 will be used to assess the 2025/2026 rates.</i>		



Description of Rates	Factor/Unit	Factor Value	Rate/Charge	Total (GST incl.)
Uniform Annual General Charge	Number of separate parts	1	\$567.00	\$567.00
General Rate - Urban Residential	Capital Value	\$1,125,000	0.00192863	\$2,169.71
Waste Management - Standard Recycling	Number of separate parts	1	\$106.64	\$106.64
Waste Management - Food Scraps Service	Number of separate parts	1	\$81.19	\$81.19
Waste Management - Refuse Standard WCC	Number of separate parts	1	\$101.95	\$101.95
Waste Management - Minimum Base Charge	Number of separate parts	1	\$63.07	\$63.07
Natural Environment Targeted Rate - Non Business	Capital Value	\$1,125,000	0.00003071	\$34.55
Water Quality Targeted Rate - Non Business	Capital Value	\$1,125,000	0.00000687	\$7.73
Climate Action Transport Targeted Rate - Urban Residential	Capital Value	\$1,125,000	0.00004819	\$54.21
Total Auckland Council Rates for 2024/2025 (including GST)				\$3,186.05